

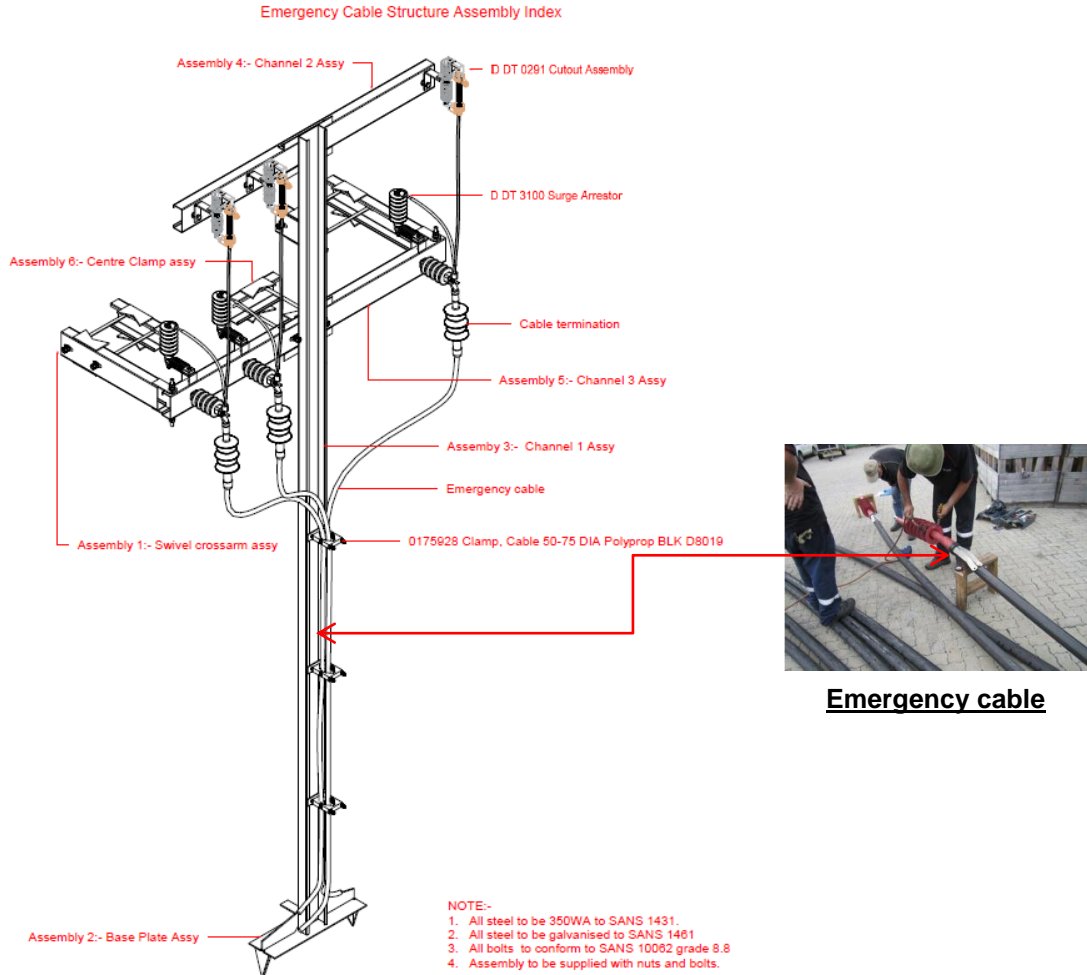
Project: Bypass Emergency Cable Structure Design

Date: 2013

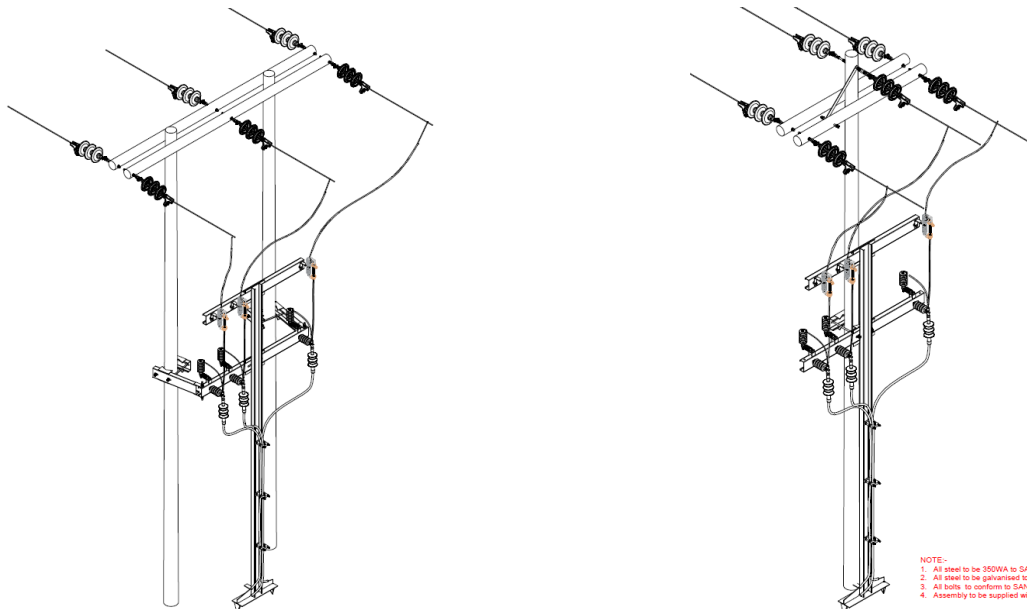
Client: Norconsult Pty Ltd - Iyanda East London

Description: The work entailed the development and design of an emergency structure to be used with the emergency cable, under live conditions, in order to isolate a section of line or substation. This included the design of the pole sections, cable cleat and cable clamp cross arm, with surge arrestors and fused cut-out assemblies, and the provision of steelwork manufacturing drawings and a Bill of Quantities.

Key Features:



New custom designed emergency cable structure



Application of emergency cable structure